

Fiery Hard Disk Partitions

Fiery HDD partitions: System 10, FS100, FS150

C: is left for OS only (50GB).

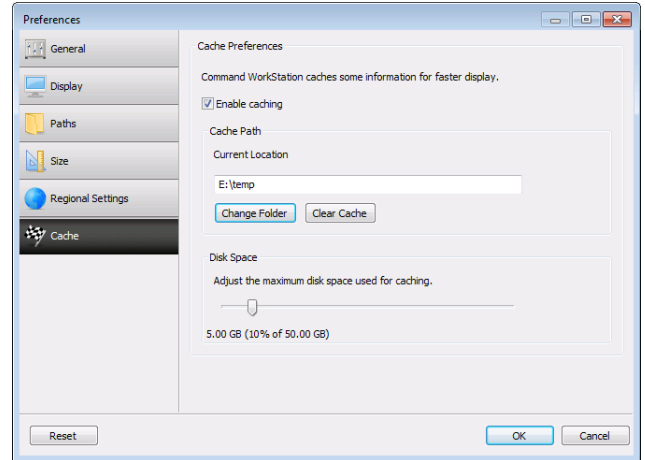
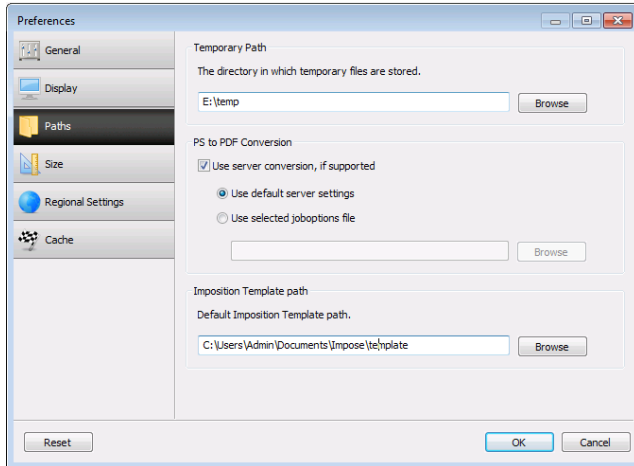
D: is a hidden partition containing a factory image for recovery (16GB)

E: is rest of drive, with space for Fiery RIP to process files, store rasters etc.

In FS200 codebase and higher we have a 100GB C: partition.

If you are experiencing problems running out of room on your C: drive then I recommend creating a folder on E: called 'Temp' or similar.

Then change Command Workstation preferences for temp files and cache settings to this directory.



If you are using Hot Folders on the Fiery FACI, then we also recommend setting the Hot Folders preferences to save original files in the E: drive as well. Hot Folders can be set to 'clear original files after: 30 days', also recommended.

